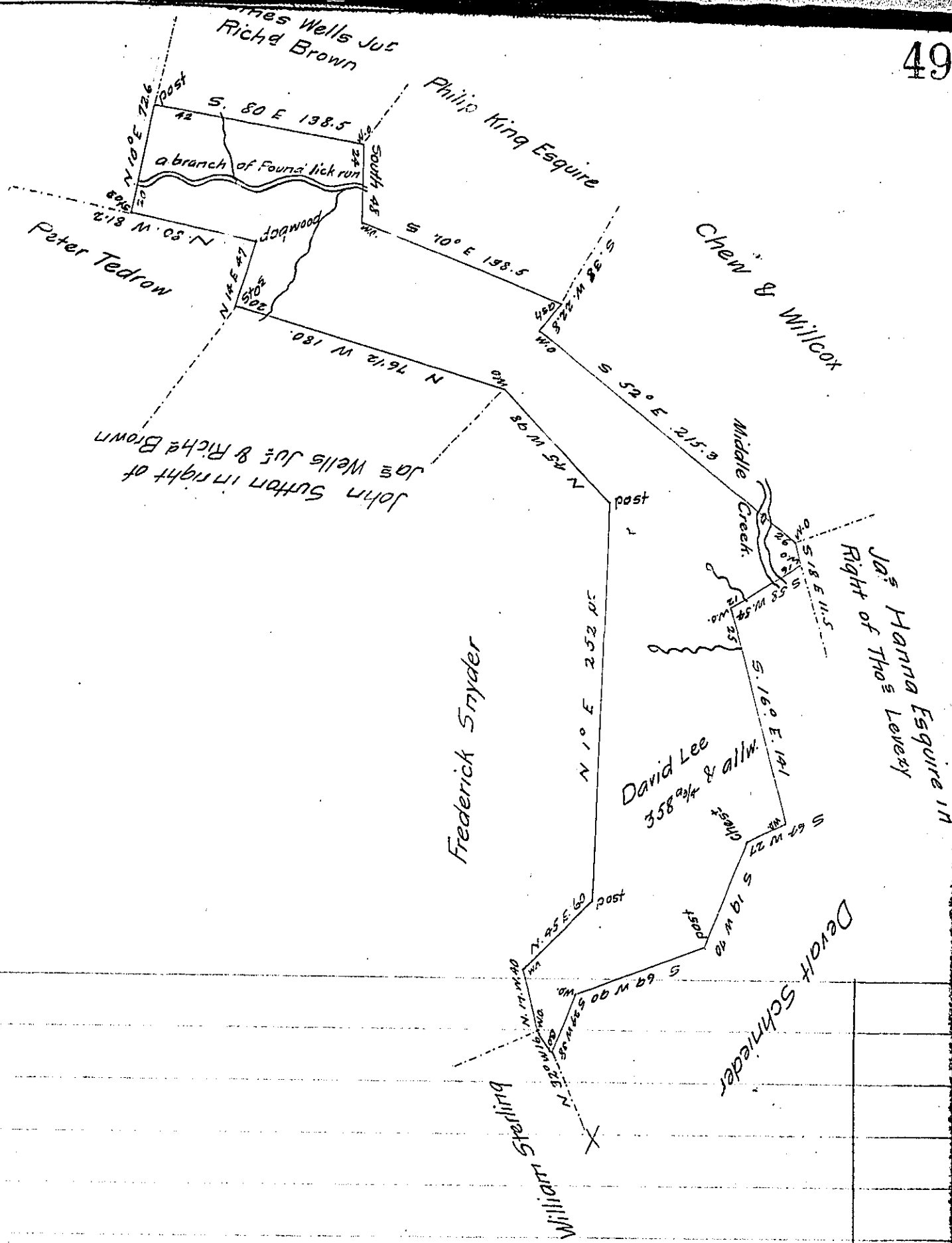


Note when this land was surveyed there was a family residing thereon and from information and the Appearance of the improvements has resided 10 or 12 Years ago from this time with a good house & Barn and perhaps 40 or 50 of Cleared Land

John McClean



Situate on the waters of the Found lick run a branch of Middle Creek including a part of said Creek part in Milford and part in Turkeyfoot Townships ~~and~~ Somerset County and surveyed the 2^d day of June 1809 in pursuance of a Warrant Granted unto David Lee for 350^a dated the 8th day of July 1805.

Pr John McClean Deputy

To Andrew Porter Esquire }
Surveyor General }

IN TESTIMONY that the above is a copy of the original remaining on file in the Department of Internal Affairs of Pennsylvania, made conformably to an Act of Assembly approved the 16th day of February, 1833, I have hereunto set my Hand and caused the Seal of said Department to be affixed at Harrisburg, this 25th day of August 1905

Joseph P. Brown
Secretary of Internal Affairs.